

CITY OF ALBUQUERQUE  
OPEN SPACE DIVISION

# West Mesa Trails Plan



April 19 2022



# *Tonight's Meeting*

## **AGENDA**

Meet the Project Team  
Goals and Vision  
Existing Conditions  
Opportunities & Constraints  
Project Timeline  
Community Input  
Close-Out



# *Meet the Team*

DAVE SIMON

Director of Parks and Recreation

COLLEEN MCROBERTS

Open Space Superintendent

TRICIA KEFFER

Planner

GEORGE RADNOVICH

Principal

BOB OBERDORFER

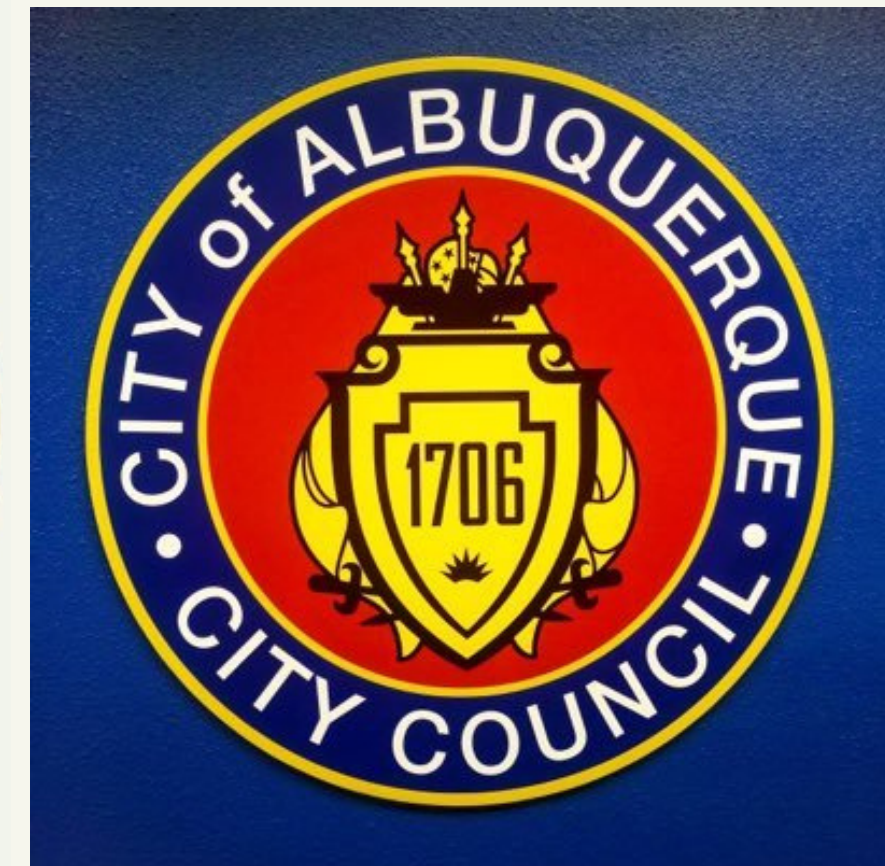
Landscape Architect

NATE BEGAY

Planner

DANI WILSON

Planner



DISTRICTS 1 & 5



CITY OF ALBUQUERQUE  
OPEN SPACE DIVISION

# Project History

WMTP • 2022





# *Project Background*

- Petroglyph National Monument
  - Visitor Use Management Plan
- West Mesa Trails network
  - Provide multi-use trails and trail connections
- City Resolution
  - "... an accessible trail system throughout the West Mesa Open Spaces will be an amenity to visitors who desire to further experience the beauty and vistas of the West Mesa. The trail system would serve a growing local population with a cohesive and well-planned trail system to support a variety of outdoor recreation activities and will result in up to twenty-four miles of new trails on the West Mesa"



# GOALS

- Develop a conceptual multi-use natural surface trail plan
- Engage stakeholders including Bernalillo County, National Park Service, Westside residents, and the general public
- Link trails to important destinations including existing landforms like the volcanoes and off-site locations

# VISION

Connect residents of the Westside to the unique landforms and recreational opportunities of West Mesa open space





CITY OF ALBUQUERQUE  
OPEN SPACE DIVISION

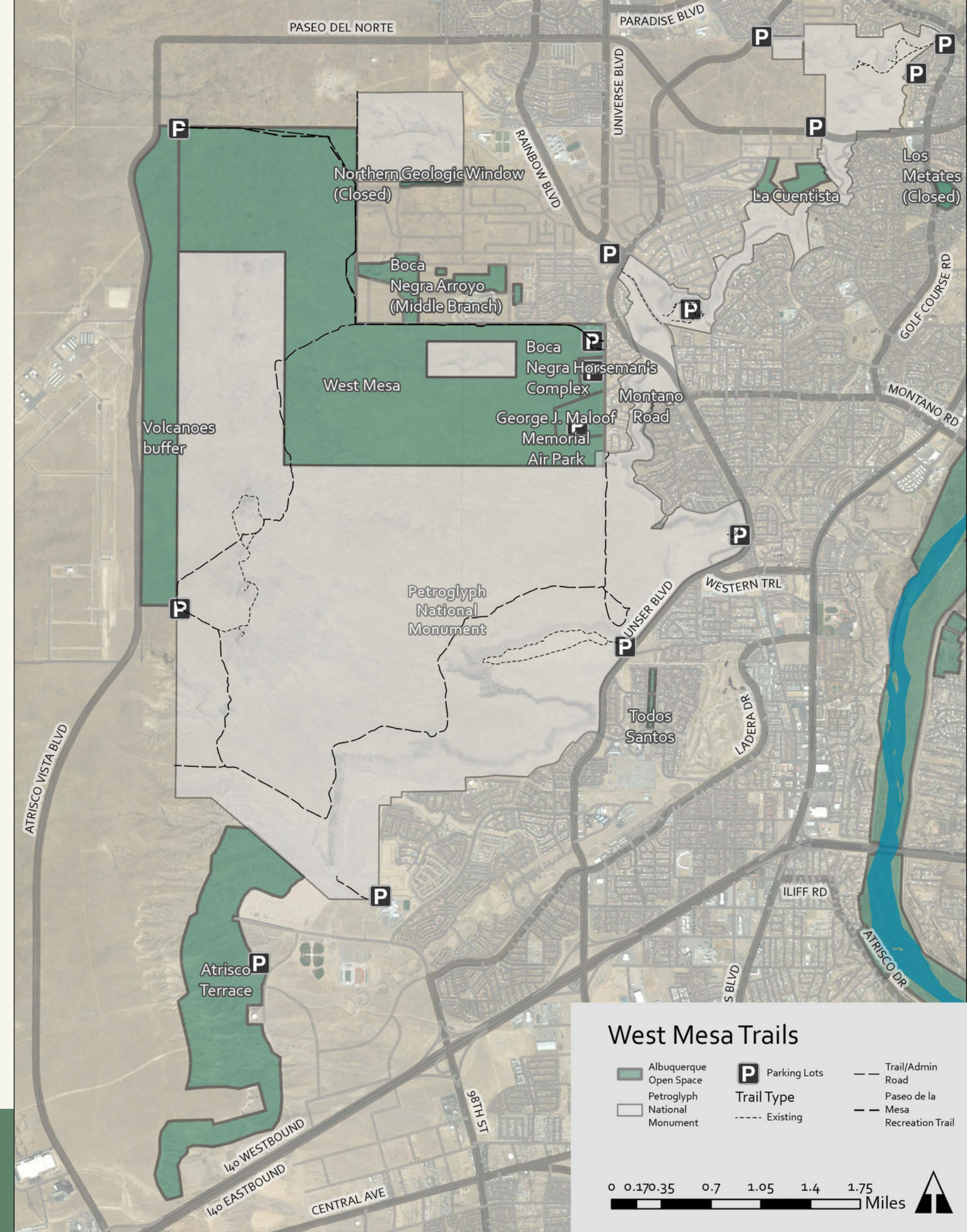
# Existing Conditions





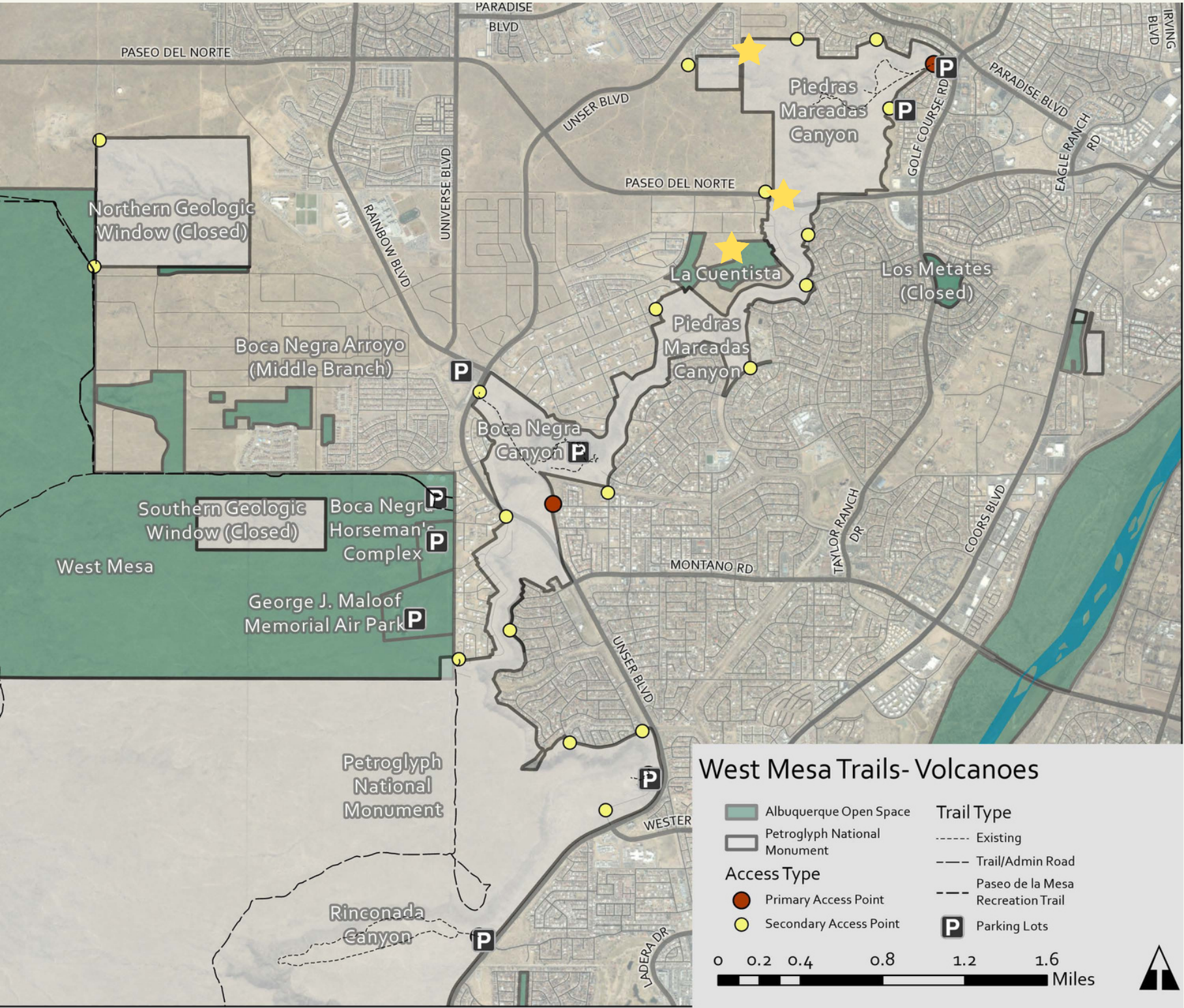
# Regional Context

CONNECTING CITY OF  
ALBUQUERQUE OPEN SPACE  
ACROSS THE WESTSIDE



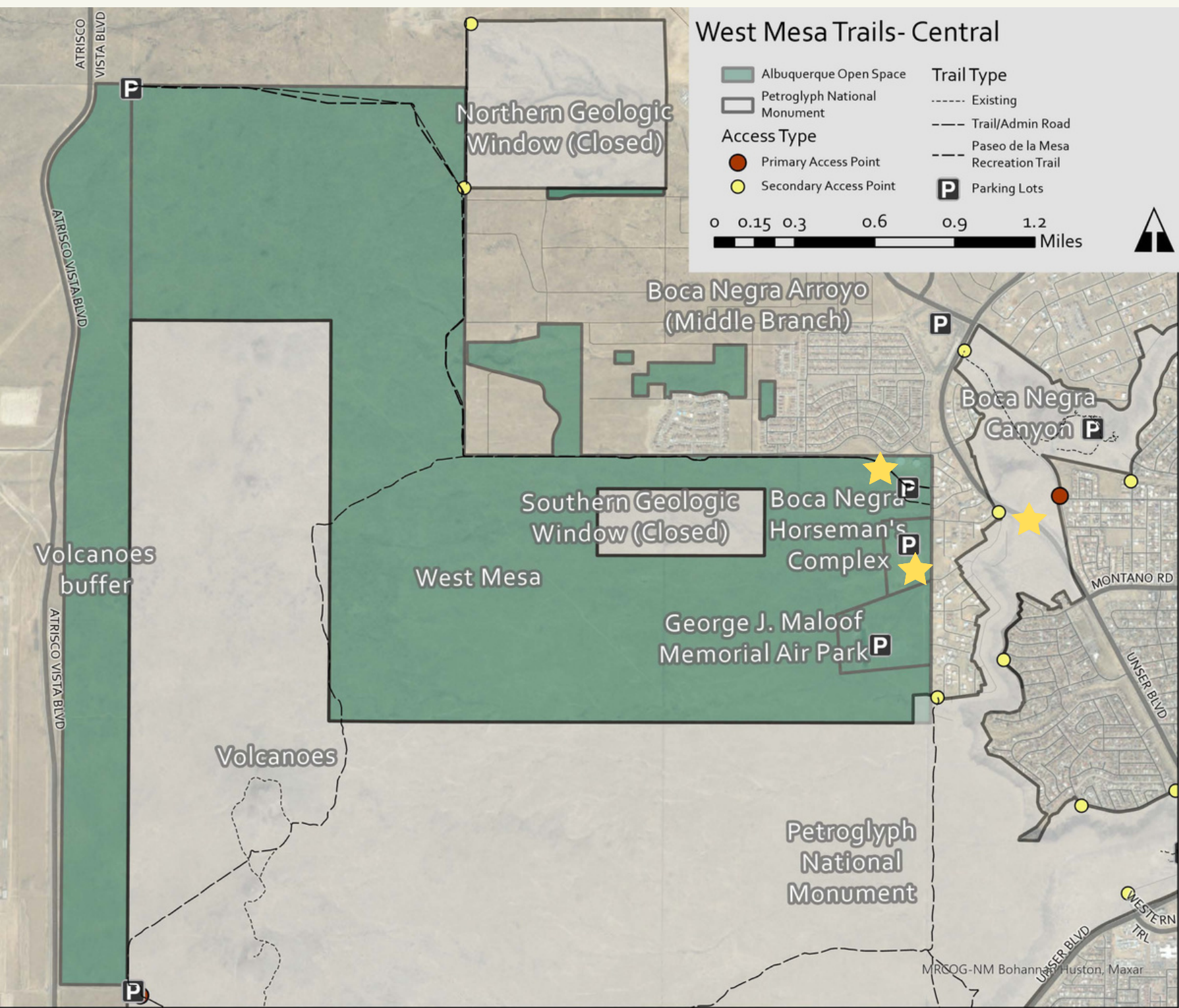


# West Mesa- North





# West Mesa- Central



Boca Negra Horseman's Complex



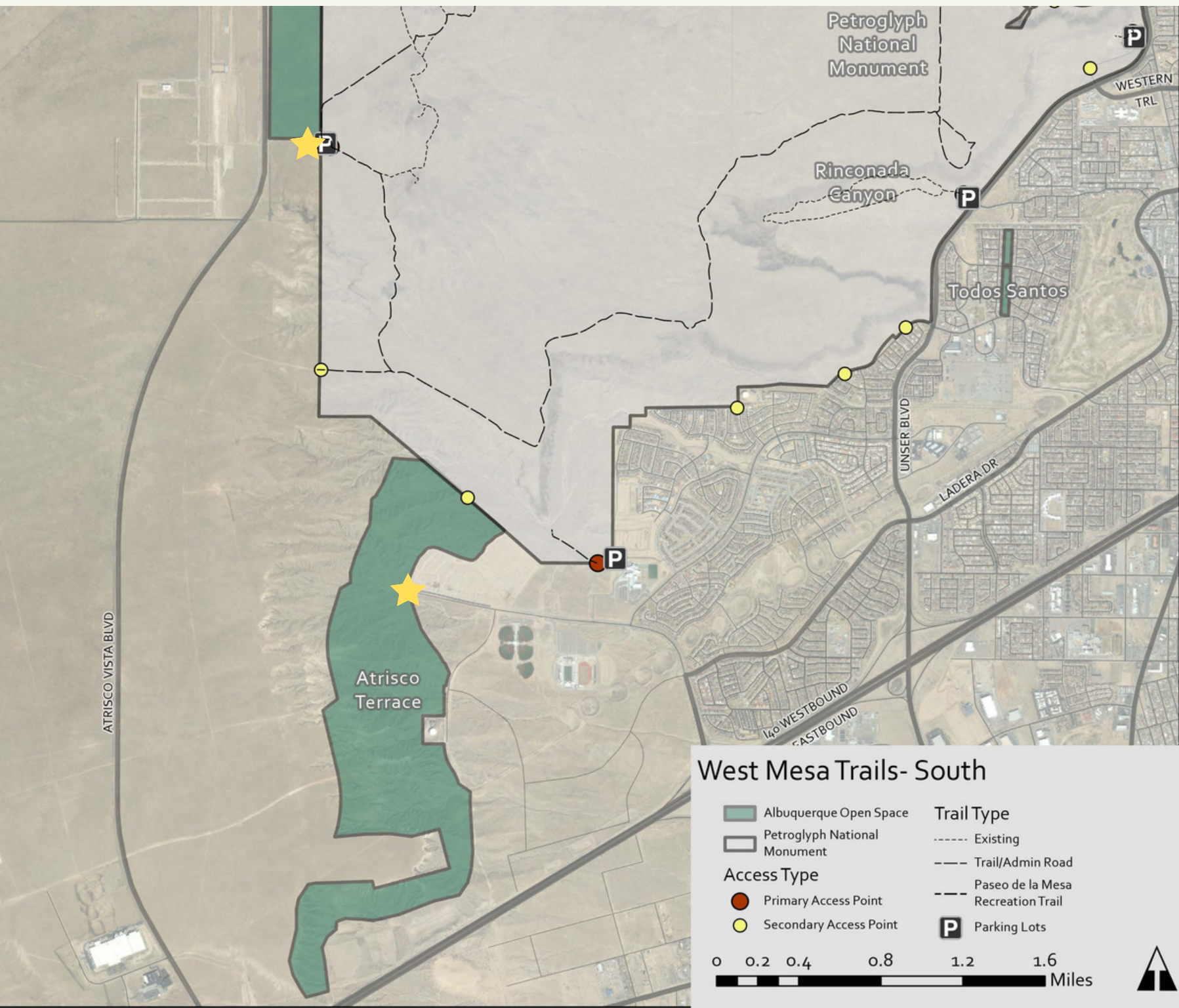
Boca Negra Canyon



Paseo de la Mesa Trailhead



# West Mesa- South



Volcanoes

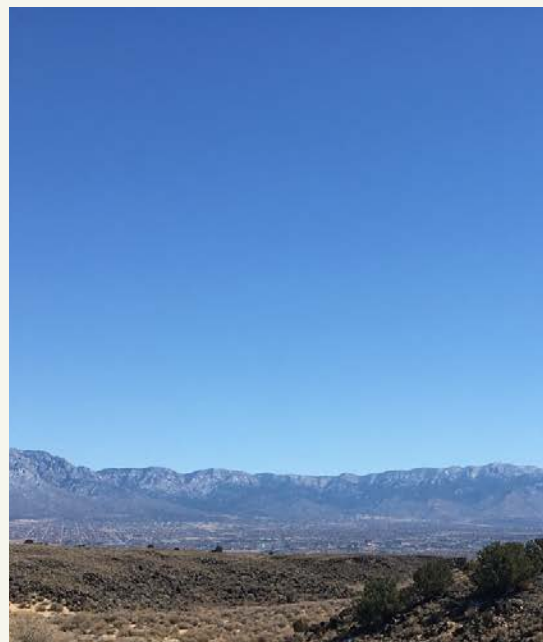


Volcanoes

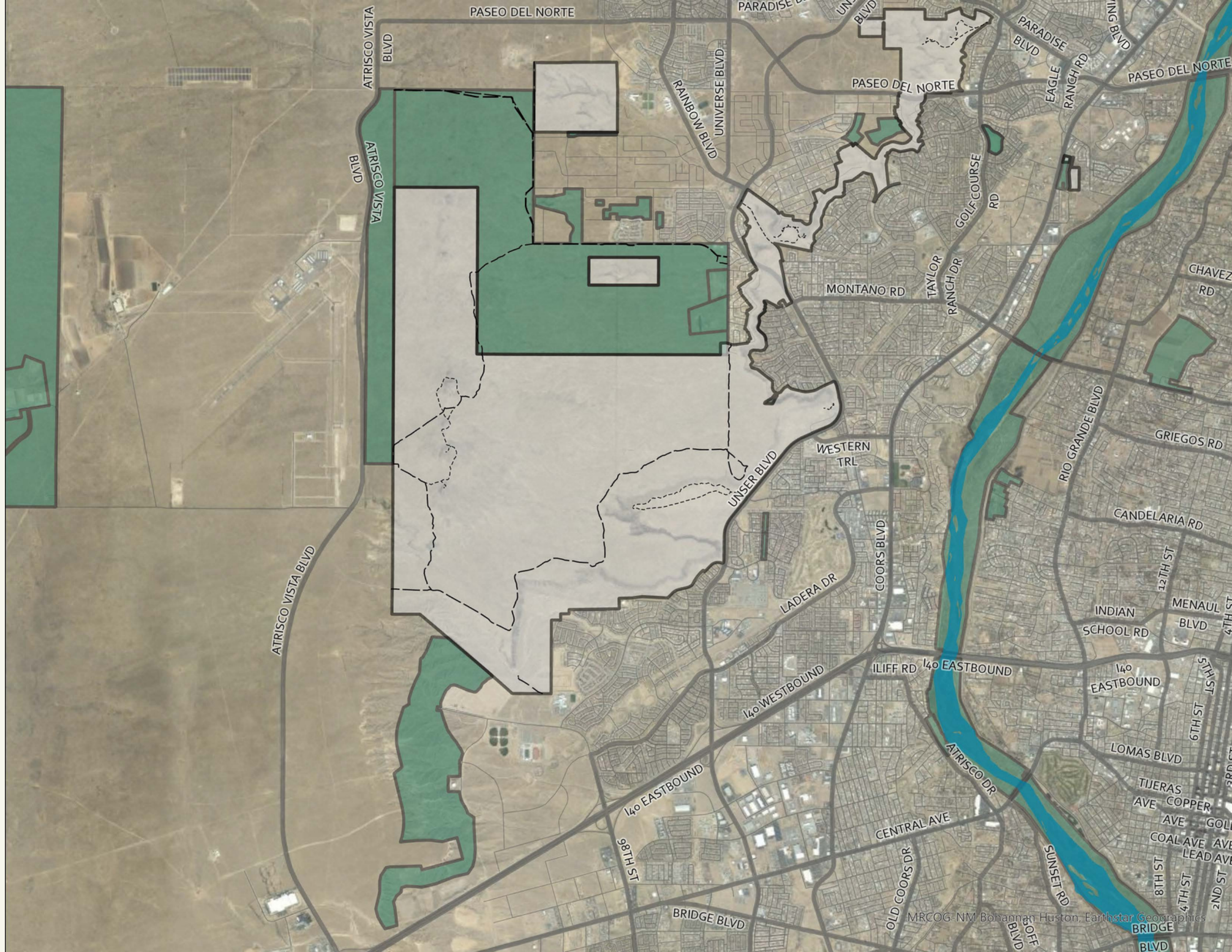


Atrisco Terrace











# Challenges & Constraints



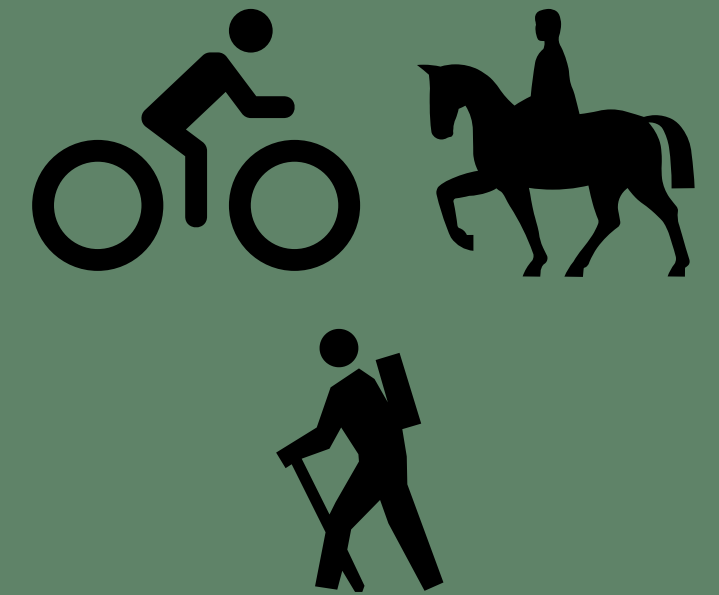
Open spaces are spread across the West Mesa and fragmented



Biking and horseback riding is not allowed on Petroglyph National Monument

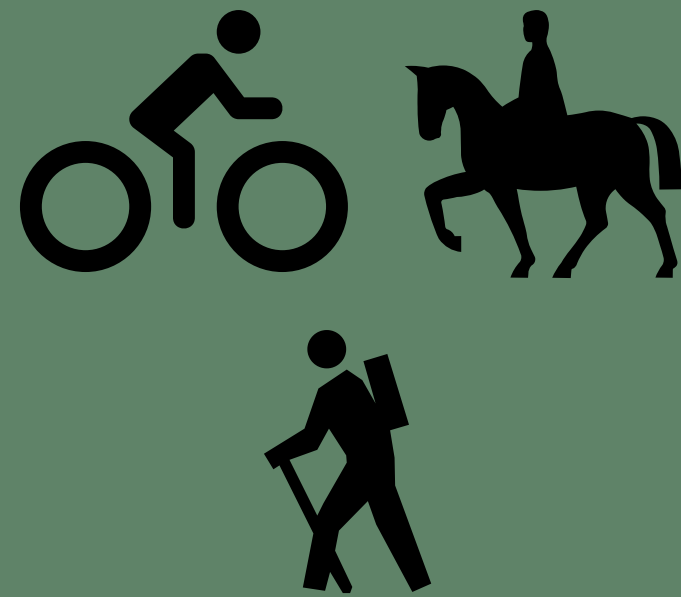


Consider nearby development to ensure safety and trail experience to trail users



Multiple trail user groups have different wants and needs





Provide more hiking, mountain biking, and horseback riding opportunities on the Westside



Improve access and connectivity to existing and future developments on the Westside



Trail usage has multiple health and wellness benefits

## *Benefits*



Trails have positive economic opportunities for surrounding communities



# *Project Timeline*

WE ARE HERE



FEBRUARY-APRIL  
2022

Inventory Existing  
Conditions

APRIL-JULY  
2022

Public engagement  
including community  
meetings, focus groups,  
website, and survey

MAY-AUGUST  
2022

Plan development and  
community update



# *Project so Far*

## COMPLETED

Site Visit with City of Albuquerque Open Space, National Park Service, and Sites Southwest

Site inventory and existing conditions analysis

Data Collection and research

## IN PROGRESS

Community meeting- April 19th, 2022

Scheduling future community meetings in district 1 and 5

Public outreach and engagement

Stakeholder outreach and focus groups

Site recommendations



CITY OF ALBUQUERQUE  
OPEN SPACE DIVISION

# Community Input



# Things to Remember

TRAILS WILL ENCOURAGE  
MULTIPLE USERS

Hiking, biking, horseback riding

TRAILS WILL PRIMARILY BE  
NATURAL SURFACE

Limited hard surface trails will be  
recommended

PLAN WILL INCLUDE UP TO  
24 MILES OF TRAIL

PETROGLYPH TRAILS HAVE  
LIMITED USER GROUPS

Biking and horseback riding is not  
permitted on Petroglyph



*What connections  
are important to  
you?*

*What uses are  
most important to  
you?*



*Thank You*  
WESTMESATRAILS.ORG